

MONSOON



THE ULTIMATE IN WATERING UNIFORMITY

Monsoon
Innovative
Technology



Low
Pressure

RAPTOR BOOM



A NEW GENERATION OF

H O S E R E E L I R R I G A T O R S
BUILT IN AUSTRALIA TO HANDLE THE HARSH ENVIRONMENT

MONSOON



820S 300



Low
Pressure
Operation



Complete
Structure Hot
Dip
Galvanised
All
Models

Superior
Uniformity

900S 250



Raptor model
27/35
Folding Boom



HOSE REEL BOOM IRRIGATORS

MONSOON



Raptor Boom Irrigators

82										300													
B00M	Boccaglio Nozzle Ajoutage Duese Boquilla	ATM	Portata totale Total capacity Debit total Gesamtwasserfuehrung Caudal total			Area irrigata Irrigated area Surface arrosee Beregnete Area Area regada	VELOCITA' MT/H PLUVIOMETRIA E PRESSIONE ALL'INGRESSO SPEED MT/H, RATE AND INLET PRESSURE VITESSE MT/H, PLUVIOMETRIE ET PRESION A L'ENTREE GESCHWINDIGKET MT/H, NIEDERSCHLAG UND EINGANGSDRUCK VELOCIDADE MT/H, PLUVIOMETRIA Y PRESION A L'ENTREGA																
							10		20		30		40		50		75		100				
			lt/sec	lt/min	mc/h		HA	mm	BAR	mm	BAR	mm	BAR	mm	BAR	mm	BAR	mm	BAR				
MOD. 27 \ 35	Verde Green Vert Grün Verde	1	5.02	301	18.06	0.93	58.3	2.1	29.1	2.2	19.4	2.4	14.6	2.6	11.7	2.7	7.8	3.2	5.8	3.6			
		2	7.12	427	25.62		82.6	3.9	41.3	4.1	27.5	4.2	20.7	4.4	16.5	4.6	11.0	5.0	8.3	5.4			
		3	8.46	507.4	30.44		98.2	5.5	49.1	5.7	32.7	5.9	24.6	6.0	19.6	6.2	13.1	6.6	9.8	7.0			
	Giallo Yellow Jaune Gelb Amarillo	1	5.88	353	21.18	0.93	68.3	2.4	34.2	2.5	22.8	2.7	17.1	2.9	13.7	3.0	9.1	3.5	6.8	3.9			
		2	8.16	489.4	29.36		94.7	4.4	47.4	4.5	31.6	4.7	23.7	4.9	18.9	5.0	12.6	5.5	9.5	5.9			
		3	10.02	601	36.06		116.3	6.4	58.2	6.6	38.8	6.7	29.1	6.9	23.3	7.1	15.5	7.5	11.6	7.9			
	Rosso Red Rouge Rot Rojo	1	6.92	415.4	24.92	0.93	80.4	2.8	40.2	3.0	26.8	3.1	20.1	3.3	16.1	3.5	10.7	3.9	8.0	4.3			
		2	9.54	572.6	34.36		110.8	5.1	55.4	5.3	36.9	5.5	27.7	5.6	22.2	5.8	14.8	6.2	11.1	6.6			
		3	11.58	694.6	41.68		134.4	7.4	67.2	7.6	44.8	7.7	33.6	7.9	26.9	8.1	17.9	8.5	13.4	8.9			
	Nero Black Noir Schwarz Negro	1	9.35	561	33.66	0.93	108.6	4.0	54.3	4.2	36.2	4.4	27.1	4.5	21.7	4.7	14.5	5.1	10.9	5.5			
		2	13.18	791	47.46		153.1	7.6	76.5	7.7	51.0	7.9	38.3	8.1	30.6	8.2	20.4	8.6	15.3	9.1			
		3	15.65	939	56.34		181.7	10.6	90.9	10.7	60.6	10.9	45.4	11.1	36.3	11.2	24.2	11.7	18.2	12.1			

90										250										
B00M	Boccaglio Nozzle Ajoutage Duese	ATM	Portata totale Total capacity Debit total Gesamtwasserfuehrung Caudal total			Area irrigata Irrigated area Surface arrosee Beregnete Area Area regada	VELOCITA' MT/H PLUVIOMETRIA E PRESSIONE ALL'INGRESSO SPEED MT/H, RATE AND INLET PRESSURE VITESSE MT/H, PLUVIOMETRIE ET PRESION A L'ENTREE GESCHWINDIGKET MT/H, NIEDERSCHLAG UND EINGANGSDRUCK VELOCIDADE MT/H, PLUVIOMETRIA Y PRESION A L'ENTREGA													
	Boquilla		lt/sec	lt/min	mc/h	HA	10		20		30		40		50		75		100	
							mm	BAR	mm	BAR	mm	BAR	mm	BAR	mm	BAR	mm	BAR		
																			mm	BAR
MOD. 27 1 35	Verde Green Vert Grün Verde	1	5.02	301	18.06	0.78	58.3	1.6	29.1	1.8	19.4	2.0	14.6	2.1	11.7	2.3	7.8	2.7	5.8	3.1
		2	7.12	427	25.62		82.6	3.1	41.3	3.2	27.5	3.4	20.7	3.6	16.5	3.7	11.0	4.2	8.3	4.6
		3	8.46	507.4	30.44		98.2	4.4	49.1	4.6	32.7	4.8	24.6	4.9	19.6	5.1	13.1	5.5	9.8	5.9
	Giallo Yellow Jaune Gelb Amarillo	1	5.88	353	21.18	0.78	68.3	1.8	34.2	2.0	22.8	2.1	17.1	2.3	13.7	2.5	9.1	2.9	6.8	3.3
		2	8.16	489.4	29.36		94.7	3.3	47.4	3.5	31.6	3.7	23.7	3.8	18.9	4.0	12.6	4.4	9.5	4.8
		3	10.02	601	36.06		116.3	4.9	58.2	5.0	38.8	5.2	29.1	5.4	23.3	5.5	15.5	6.0	11.6	6.4
	Rosso Red Rouge Rot Rojo	1	6.92	415.4	24.92	0.78	80.4	2.0	40.2	2.2	26.8	2.4	20.1	2.5	16.1	2.7	10.7	3.1	8.0	3.5
		2	9.54	572.6	34.36		110.8	3.7	55.4	3.9	36.9	4.1	27.7	4.2	22.2	4.4	14.8	4.8	11.1	5.2
		3	11.58	694.6	41.68		134.4	5.4	67.2	5.6	44.8	5.7	33.6	5.9	26.9	6.1	17.9	6.5	13.4	6.9
	Nero Black Noir Schwarz Negro	1	9.35	561	33.66	0.78	108.6	2.7	54.3	2.8	36.2	3.0	27.1	3.2	21.7	3.3	14.5	3.8	10.9	4.2
		2	13.18	791	47.46		153.1	5.0	76.5	5.2	51.0	5.4	38.3	5.5	30.6	5.7	20.4	6.1	15.3	6.5
		3	15.65	939	56.34		181.7	7.1	90.9	7.3	60.6	7.4	45.4	7.6	36.3	7.8	24.2	8.2	18.2	8.6

SUPPLIERS AND INSTALLERS OF PUMPING AND IRRIGATION EQUIPMENT

Admin, Sales & Factory 8 Buckman Close, Toormina NSW 2452. PO Box 514 Coffs Harbour 2450

Phone: 0266525264

Fax: 02 6652 8595

Email: sales@monsoonirrigators.com.au Web: www.monsoonirrigators.com.au

MONSOON



900 IRL 300 - 350

Labour
Saving



Fully Transportable
Within Minutes,
Quick Folding Action



Raptor Model 39/47 Folding Boom

*Efficient Spray
Pattern
*Minimal Ground
Compaction



THE COST EFFICIENT MACHINES

MONSOON



Raptor Boom Irrigators

90										300												
B00M	Boccaglio Nozzle Ajoutage Duese Boquilla	ATM	Portata totale Total capacity Debit total Gesamtwasserführung Caudal total				Area irrigata Irrigated area Surface arroseee Beregnete Area Area regada		VELOCITA' MT/H PLUVIOMETRIA E PRESSIONE ALL'INGRESSO SPEED MT/H, RATE AND INLET PRESSURE VITESSE MT/H, PLUVIOMETRIE ET PRESION A L'ENTREE GESCHWINDIGKEIT MT/H, NIEDERSCHLAG UND EINGANGSDRUCK VELOCIDADE MT/H, PLUVIOMETRIA Y PRESION A L'ENTREGA													
									10		20		30		40		50		75		100	
			lt/sec	lt/min	mc/h	HA	mm	BAR	mm	BAR	mm	BAR	mm	BAR	mm	BAR	mm	BAR	mm	BAR		
MOD. 39 47	Verde Green Vert Grün Verde	1	6.15	369.255	22.16	1.29	51.5	2.0	25.8	2.2	17.2	2.3	12.9	2.5	10.3	2.7	6.9	3.1	5.2	3.5		
		2	8.78	526.915	31.61		73.5	3.8	36.8	3.9	24.5	4.1	18.4	4.3	14.7	4.4	9.8	4.9	7.4	5.3		
		3	10.42	625.494	37.53		87.3	5.4	43.6	5.6	29.1	5.7	21.8	5.9	17.5	6.1	11.6	6.5	8.7	6.9		
	Giallo Yellow Jaune Gelb Amarillo	1	7.32	438.957	26.34	1.29	61.2	2.3	30.6	2.5	20.4	2.7	15.3	2.8	12.2	3.0	8.2	3.4	6.1	3.8		
		2	10.18	610.557	36.63		85.2	4.3	42.6	4.5	28.4	4.6	21.3	4.8	17.0	5.0	11.4	5.4	8.5	5.8		
		3	12.52	750.957	45.06		104.8	6.3	52.4	6.4	34.9	6.6	26.2	6.8	21.0	6.9	14.0	7.4	10.5	7.8		
	Rosso Red Rouge Rot Rojo	1	8.71	522.6	31.36	1.29	72.9	2.8	36.5	2.9	24.3	3.1	18.2	3.3	14.6	3.4	9.7	3.8	7.3	4.3		
		2	12.03	722.081	43.32		100.8	5.1	50.4	5.2	33.6	5.4	25.2	5.6	20.2	5.7	13.4	6.1	10.1	6.6		
		3	14.61	876.421	52.59		122.3	7.3	61.1	7.5	40.8	7.6	30.6	7.8	24.5	8.0	16.3	8.4	12.2	8.8		
	Nero Black Noir Schwarz Negro	1	12.76	765.728	45.94	1.29	106.8	4.4	53.4	4.6	35.6	4.7	26.7	4.9	21.4	5.1	14.2	5.5	10.7	5.9		
		2	18.04	1082.37	64.94		151.0	8.3	75.5	8.5	50.3	8.6	37.8	8.8	30.2	9.0	20.1	9.4	15.1	9.8		
		3	21.40	1284.01	77.04		179.2	11.6	89.6	11.7	59.7	11.9	44.8	12.1	35.8	12.2	23.9	12.7	17.9	13.1		

90										350												
B00M	Boccaglio Nozzle Ajoutage Duese Boquilla	ATM	Portata totale Total capacity Debit total Gesamtwasserführung Caudal total				Area irrigata Irrigated area Surface arrosée Beregnete Area Area regada		VELOCITA' MT/H PLUVIOMETRIA E PRESSIONE ALL'INGRESSO SPEED MT/H, RATE AND INLET PRESSURE VITESSE MT/H, PLUVIOMETRIE ET PRESION A L'ENTREE GESCHWINDIGKEIT MT/H, NIEDERSCHLAG UND EINGANGSDRUCK VELOCIDADE MT/H, PLUVIOMETRIA Y PRESION A L'ENTREGA													
									10		20		30		40		50		75		100	
			lt/sec	lt/min	mc/h	HA	mm	BAR	mm	BAR	mm	BAR	mm	BAR	mm	BAR	mm	BAR	mm	BAR		
MOD. 39 47	Verde Green Vert Grün Verde	1	6.15	369.255	22.16	1.51	51.5	2.1	25.8	2.3	17.2	2.5	12.9	2.6	10.3	2.8	6.9	3.2	5.2	3.6		
		2	8.78	526.915	31.61		73.5	4.0	36.8	4.2	24.5	4.4	18.4	4.5	14.7	4.7	9.8	5.1	7.4	5.5		
		3	10.42	625.494	37.53		87.3	5.8	43.6	5.9	29.1	6.1	21.8	6.3	17.5	6.4	11.6	6.8	8.7	7.3		
	Giallo Yellow Jaune Gelb Amarillo	1	7.32	438.957	26.34	1.51	61.2	2.5	30.6	2.7	20.4	2.8	15.3	3.0	12.2	3.2	8.2	3.6	6.1	4.0		
		2	10.18	610.557	36.63		85.2	4.6	42.6	4.8	28.4	5.0	21.3	5.1	17.0	5.3	11.4	5.7	8.5	6.1		
		3	12.52	750.957	45.06		104.8	6.8	52.4	7.0	34.9	7.1	26.2	7.3	21.0	7.5	14.0	7.9	10.5	8.3		
	Rosso Red Rouge Rot Rojo	1	8.71	522.6	31.36	1.51	72.9	3.0	36.5	3.2	24.3	3.4	18.2	3.5	14.6	3.7	9.7	4.1	7.3	4.5		
		2	12.03	722.081	43.32		100.8	5.5	50.4	5.7	33.6	5.9	25.2	6.0	20.2	6.2	13.4	6.6	10.1	7.0		
		3	14.61	876.421	52.59		122.3	8.0	61.1	8.2	40.8	8.3	30.6	8.5	24.5	8.7	16.3	9.1	12.2	9.5		
	Nero Black Noir Schwarz Negro	1	12.76	765.728	45.94	1.51	106.8	4.9	53.4	5.1	35.6	5.3	26.7	5.4	21.4	5.6	14.2	6.0	10.7	6.4		
		2	18.04	1082.37	64.94		151.0	9.3	75.5	9.5	50.3	9.6	37.8	9.8	30.2	10.0	20.1	10.4	15.1	10.8		
		3	21.40	1284.01	77.04		179.2	13.0	89.6	13.1	59.7	13.3	44.8	13.5	35.8	13.6	23.9	14.1	17.9	14.5		

SUPPLIERS AND INSTALLERS OF PUMPING AND IRRIGATION EQUIPMENT
Admin, Sales & Factory 8 Buckman Close, Toormina NSW 2452. PO Box 514 Coffs Harbour 2450
Phone: 0266525264 Fax: 02 6652 8595
Email: sales@monsoonirrigators.com.au Web: www.monsoonirrigators.com.au

MONSOON

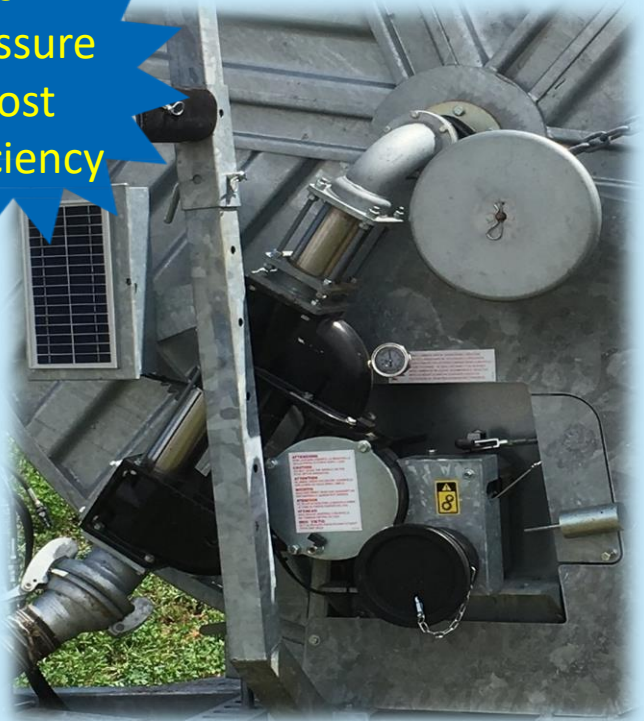


1000 IRL 330 / 400

Low
Pressure
Cost
Efficiency



Ultimate
Watering
Efficiency



Low Pressure Turbine
Drive

High Grade Materials
to Resist Corrosion

Raptor Model 39/47 Folding Boom



ULTIMATE WATERING EFFICIENCY

MONSOON



Raptor Boom Irrigators

100										330															
MOD.	B00M	Boccaglio Nozzle Ajoutage Duese Boquilla	ATM	Portata totale Total capacity			Area irrigata Irrigated area Surface arrosee Beregnete Area Area regada	VELOCITA' MT/H PLUVIOMETRIA E PRESSIONE ALL'INGRESSO SPEED MT/H, RATE AND INLET PRESSURE VITESSE MT/H, PLUVIOMETRIE ET PRESION A L'ENTREE GESCHWINDIGKEIT MT/H, NIEDERSCHLAG UND EINGANGSDRUCK VELOCIDADE MT/H, PLUVIOMETRIA Y PRESION A L'ENTREGA																	
				Debit total Gesamtwasserführung Caudal total				10				20		30		40		50		75		100			
				lt/sec	lt/min	mc/h		HA	mm	BAR	mm	BAR	mm	BAR	mm	BAR	mm	BAR	mm	BAR	mm	BAR			
				39	47	Verde Green Vert Grün Verde	1	6.15	369.255	22.16	1.42	51.5	1.7	25.8	1.9	17.2	2.1	12.9	2.2	10.3	2.4	6.9	2.8	5.2	3.2
							2	8.78	526.915	31.61		73.5	3.2	36.8	3.4	24.5	3.6	18.4	3.7	14.7	3.9	9.8	4.3	7.4	4.7
3	10.42	625.494	37.53					87.3	4.6	43.6	4.8	29.1	5.0	21.8	5.1	17.5	5.3	11.6	5.7	8.7	6.1				
39	47	Giallo Yellow Jaune Gelb Amarillo	1	7.32	438.957	26.34	1.42	61.2	1.9	30.6	2.1	20.4	2.3	15.3	2.4	12.2	2.6	8.2	3.0	6.1	3.4				
			2	10.18	610.557	36.63		85.2	3.6	42.6	3.7	28.4	3.9	21.3	4.1	17.0	4.2	11.4	4.6	8.5	5.1				
			3	12.52	750.957	45.06		104.8	5.2	52.4	5.4	34.9	5.5	26.2	5.7	21.0	5.9	14.0	6.3	10.5	6.7				
39	47	Rosso Red Rouge Rot Rojo	1	8.71	522.6	31.36	1.42	72.9	2.2	36.5	2.4	24.3	2.5	18.2	2.7	14.6	2.9	9.7	3.3	7.3	3.7				
			2	12.03	722.081	43.32		100.8	4.1	50.4	4.2	33.6	4.4	25.2	4.6	20.2	4.7	13.4	5.2	10.1	5.6				
			3	14.61	876.421	52.59		122.3	5.9	61.1	6.1	40.8	6.2	30.6	6.4	24.5	6.6	16.3	7.0	12.2	7.4				
39	47	Nero Black Noir Schwarz Negro	1	12.76	765.728	45.94	1.42	106.8	3.3	53.4	3.5	35.6	3.6	26.7	3.8	21.4	4.0	14.2	4.4	10.7	4.8				
			2	18.04	1082.37	64.94		151.0	6.2	75.5	6.4	50.3	6.5	37.8	6.7	30.2	6.9	20.1	7.3	15.1	7.7				
			3	21.40	1284.01	77.04		179.2	8.7	89.6	8.9	59.7	9.0	44.8	9.2	35.8	9.4	23.9	9.8	17.9	10.2				

100										400												
MOD.	B00M	Boccaglio Nozzle Ajoutage Duese Boquilla	ATM	Portata totale Total capacity Debit total Gesamtwasserführung Caudal total			Area irrigata Irrigated area Surface arrosee Beregnete Area Area regada	VELOCITA' MT/H PLUVIOMETRIA E PRESSIONE ALL'INGRESSO SPEED MT/H , RATE AND INLET PRESSURE VITESSE MT/H , PLUVIOMETRIE ET PRESION A L'ENTREE GESCHWINDIGKET MT/H , NEDERSCHLAG UND EINGANGSDRUCK VELOCIDADE MT/H , PLUVIOMETRIA Y PRESION A L'ENTREGA														
				lt/sec	lt/min	mc/h		HA	10		20		30		40		50		75		100	
									mm	BAR	mm	BAR	mm	BAR	mm	BAR	mm	BAR	mm	BAR	mm	BAR
39	47	Verde Green Vert Grün Verde	1	6.15	369.255	22.16	1.72	51.5	1.8	25.8	2.0	17.2	2.2	12.9	2.3	10.3	2.5	6.9	2.9	5.2	3.3	
			2	8.78	526.915	31.61	73.5	3.5	36.8	3.6	24.5	3.8	18.4	4.0	14.7	4.1	9.8	4.5	7.4	5.0		
			3	10.42	625.494	37.53	87.3	4.9	43.6	5.1	29.1	5.3	21.8	5.4	17.5	5.6	11.6	6.0	8.7	6.4		
	Giallo Yellow Jaune Gelb Amarillo	1	7.32	438.957	26.34	1.72	61.2	2.1	30.6	2.3	20.4	2.4	15.3	2.6	12.2	2.8	8.2	3.2	6.1	3.6		
		2	10.18	610.557	36.63	85.2	3.9	42.6	4.0	28.4	4.2	21.3	4.4	17.0	4.5	11.4	4.9	8.5	5.4			
		3	12.52	750.957	45.06	104.8	5.6	52.4	5.8	34.9	6.0	26.2	6.1	21.0	6.3	14.0	6.7	10.5	7.1			
	Rosso Red Rouge Rot Rojo	1	8.71	522.6	31.36	1.72	72.9	2.4	36.5	2.6	24.3	2.8	18.2	2.9	14.6	3.1	9.7	3.5	7.3	3.9		
		2	12.03	722.081	43.32	100.8	4.5	50.4	4.6	33.6	4.8	25.2	5.0	20.2	5.1	13.4	5.6	10.1	6.0			
		3	14.61	876.421	52.59	122.3	6.5	61.1	6.6	40.8	6.8	30.6	7.0	24.5	7.1	16.3	7.6	12.2	8.0			
	Nero Black Noir Schwarz Negro	1	12.76	765.728	45.94	1.72	106.8	3.7	53.4	3.9	35.6	4.1	26.7	4.2	21.4	4.4	14.2	4.8	10.7	5.2		
		2	18.04	1082.37	64.94	151.0	7.1	75.5	7.2	50.3	7.4	37.8	7.6	30.2	7.7	20.1	8.1	15.1	8.6			
		3	21.40	1284.01	77.04	179.2	9.9	89.6	10.0	59.7	10.2	44.8	10.4	35.8	10.5	23.9	11.0	17.9	11.4			

SUPPLIERS AND INSTALLERS OF PUMPING AND IRRIGATION EQUIPMENT
Admin, Sales & Factory: 8 Buckman Close, Toormina NSW 2452. PO Box 514 Coffs Harbour 2450
Phone: 02 6652 5264 **Fax:** 02 6652 8595
Email: sales@monsoonirrigators.com.au **Web:** www.monsoonirrigators.com.au

MONSOON



**Complete
Structure
Hot Dipped
Galvanised**

1100 CAM 330



**PTO Rewind Drive Shaft
270° Turntable Operation
4 Wheel Adjustable Track
Trolley
Electronic Speed
Controller
Advanced Controller Optional**

1100 DAM 420



**Durable
Long Life
Span**

**Low Pressure Turbine
Drive
Multi Speed Corner
Gear Box (All Models)
Low Pressure Turbine
Drive**



1100 IRL 330 - 440



Irriland European Series

**Raptor Folding Boom Model
47/55**



**Low Operating Costs
Approx 50% of Conventional
Travelling Gun Irrigators**

VERSATILITY LABOUR SAVING

MONSOON



Raptor Boom Irrigators

110										330																
MOD.	B00M	Boccaglio Nozzle Ajoutage Duese Boquilla	ATM	Portata totale Total capacity Debit total Gesamtwasserführung Caudal total			Area irrigata Irrigated area Surface arrosee Beregnete Area Area regada		VELOCITA' MT/H PLUVIOMETRIA E PRESSIONE ALL'INGRESSO SPEED MT/H, RATE AND INLET PRESSURE VITESSE MT/H, PLUVIOMETRIE ET PRESION A L'ENTREE GESCHWINDIGKET MT/H, NIEDERSCHLAG UND EINGANGSDRUCK VELOCIDADE MT/H, PLUVIOMETRIA Y PRESION A L'ENTREGA																	
									10		20		30		40		50		75		100					
				lt/sec	lt/min	mch	HA		mm	BAR	mm	BAR	mm	BAR	mm	BAR	mm	BAR	mm	BAR	mm	BAR				
39	47	Verde Green Vert Grün Verde	1	6.15	369.255	22.16	1.42		51.5	1.5	25.8	1.7	17.2	1.8	12.9	2.0	10.3	2.2	6.9	2.6	5.2	3.0				
			2	8.78	526.915	31.61			73.5	2.8	36.8	3.0	24.5	3.2	18.4	3.3	14.7	3.5	9.8	3.9	7.4	4.3				
			3	10.42	625.494	37.53			87.3	4.1	43.6	4.3	29.1	4.4	21.8	4.6	17.5	4.8	11.6	5.2	8.7	5.6				
	Giallo Yellow Jaune Gelb Amarillo	1	7.32	438.957	26.34	1.42		61.2	1.6	30.6	1.8	20.4	2.0	15.3	2.1	12.2	2.3	8.2	2.7	6.1	3.1					
		2	10.18	610.557	36.63			85.2	3.0	42.6	3.2	28.4	3.4	21.3	3.5	17.0	3.7	11.4	4.1	8.5	4.5					
		3	12.52	750.957	45.06			104.8	4.5	52.4	4.6	34.9	4.8	26.2	5.0	21.0	5.1	14.0	5.5	10.5	6.0					
	Rosso Red Rouge Rot Rojo	1	8.71	522.6	31.36	1.42		72.9	1.8	36.5	2.0	24.3	2.2	18.2	2.3	14.6	2.5	9.7	2.9	7.3	3.3					
		2	12.03	722.081	43.32			100.8	3.4	50.4	3.5	33.6	3.7	25.2	3.9	20.2	4.0	13.4	4.4	10.1	4.9					
		3	14.61	876.421	52.59			122.3	4.9	61.1	5.0	40.8	5.2	30.6	5.4	24.5	5.5	16.3	6.0	12.2	6.4					
	Nero Black Noir Schwarz Negro	1	12.76	765.728	45.94	1.42		106.8	2.5	53.4	2.7	35.6	2.8	26.7	3.0	21.4	3.2	14.2	3.6	10.7	4.0					
		2	18.04	1082.37	64.94			151.0	4.7	75.5	4.9	50.3	5.0	37.8	5.2	30.2	5.4	20.1	5.8	15.1	6.2					
		3	21.40	1284.01	77.04			179.2	6.6	89.6	6.8	59.7	7.0	44.8	7.1	35.8	7.3	23.9	7.7	17.9	8.1					

110										420											
B00M	Boccaglio Nozzle Ajoutage Duese		ATM	Portata totale Total capacity Debit total Gesamtwasserführung Caudal total			Area irrigata Irrigated area Surface arrosée Beregnete Area Area regada		VELOCITA' MT/H PLUVIOMETRIA E PRESSIONE ALL'INGRESSO SPEED MT/H, RATE AND INLET PRESSURE VITESSE MT/H, PLUVIOMETRIE ET PRESION A L'ENTREE GESCHWINDIGKET MT/H, NIEDERSCHLAG UND EINGANGSDRUCK VELOCIDADE MT/H, PLUVIOMETRIA Y PRESION A L'ENTREGA												
						10		20		30		40		50		75		100			
	Boquilla			lt/sec	lt/min	mc/h	HA		mm	BAR	mm	BAR	mm	BAR	mm	BAR	mm	BAR	mm	BAR	
MOD. 47 55	Verde Green Vert Grün Verde		1	7.42	445	26.70	2.14	52.4	1.8	26.2	2.0	17.5	2.1	13.1	2.3	10.5	2.5	7.0	2.9	5.2	3.3
			2	10.58	635	38.10		74.7	3.4	37.4	3.5	24.9	3.7	18.7	3.9	14.9	4.0	10.0	4.5	7.5	4.9
			3	12.56	753.8	45.23		88.7	4.8	44.3	5.0	29.6	5.2	22.2	5.3	17.7	5.5	11.8	5.9	8.9	6.3
	Giallo Yellow Jaune Gelb Amarillo		1	8.82	529	31.74	2.14	62.2	2.0	31.1	2.2	20.7	2.4	15.6	2.5	12.4	2.7	8.3	3.1	6.2	3.5
			2	12.26	735.8	44.15		86.6	3.7	43.3	3.9	28.9	4.1	21.6	4.2	17.3	4.4	11.5	4.8	8.7	5.2
			3	15.08	905	54.30		106.5	5.5	53.2	5.6	35.5	5.8	26.6	6.0	21.3	6.1	14.2	6.6	10.6	7.0
	Rosso Red Rouge Rot Rojo		1	10.50	629.8	37.79	2.14	74.1	2.3	37.0	2.5	24.7	2.7	18.5	2.8	14.8	3.0	9.9	3.4	7.4	3.8
			2	14.50	870.2	52.21		102.4	4.3	51.2	4.5	34.1	4.7	25.6	4.8	20.5	5.0	13.7	5.4	10.2	5.8
			3	17.60	1056.2	63.37		124.3	6.2	62.1	6.4	41.4	6.6	31.1	6.7	24.9	6.9	16.6	7.3	12.4	7.7
	Nero Black Noir Schwarz Negro		1	15.38	922.8	55.36	2.14	108.5	3.6	54.3	3.7	36.2	3.9	27.1	4.1	21.7	4.2	14.5	4.7	10.9	5.1
			2	21.74	1304.4	78.26		153.5	6.7	76.7	6.9	51.2	7.1	38.4	7.2	30.7	7.4	20.5	7.8	15.3	8.2
			3	25.79	1547.4	92.84		182.0	9.4	91.0	9.6	60.7	9.8	45.5	9.9	36.4	10.1	24.3	10.5	18.2	10.9

SUPPLIERS AND INSTALLERS OF PUMPING AND IRRIGATION EQUIPMENT

Admin, Sales & Factory: 8 Buckman Close, Toormina NSW 2452. PO Box 514 Coffs Harbour 2450

Phone: 02 6652 5264 **Fax:** 02 6652 8595

Email: sales@monsoonirrigators.com.au **Web:** www.monsoonirrigators.com.au

MONSOON



1250 350 - 420

Unique Warranty
*3 Years replacement
+ 3 Years Pro-Rata
On PE Hose
*1 Year on Machine
Components



Low Pressure Turbine
Drive



High Grade
Galvanised Steel
Resists Corrosion



Height Adjustable
To 2.2 Meters
Ideal for Corn & Sorghum



Versatile



Raptor Model 47/55 Folding Boom

LOW PRESSURE COST EFFICIENCY

MONSOON



Raptor Boom Irrigators

125										350											
BOOM	Boccaglio Nozzle Ajoutage Duese	ATM	Portata totale Total capacity Debit total Gesamtwasserführung Caudal total			Area irrigata Irrigated area Surface arrosée Beregnete Area Area regada	VELOCITA' MT/H PLUVIOMETRIA E PRESSIONE ALL'INGRESSO SPEED MT/H, RATE AND INLET PRESSURE VITESSE MT/H, PLUVIOMETRIE ET PRESSION A L'ENTREE GESCHWINDIGKEIT MT/H, NIEDERSCHLAG UND EINGANGSDRUCK VELOCIDADE MT/H, PLUVIOMETRIA Y PRESSION A L'ENTREGA														
			lt/sec	lt/min	mc/h		HA	10		20		30		40		50		75		100	
								mm	BAR	mm	BAR	mm	BAR	mm	BAR	mm	BAR	mm	BAR	mm	BAR
MOD. 47 \ 55	Verde Green Vert Grün Verde	1	7.42	445	26.70	1.79	52.4	1.4	26.2	1.6	17.5	1.8	13.1	1.9	10.5	2.1	7.0	2.5	5.2	2.9	
		2	10.58	635	38.10	74.7	2.7	37.4	2.9	24.9	3.0	18.7	3.2	14.9	3.4	10.0	3.8	7.5	4.2		
		3	12.56	753.8	45.23	88.7	3.9	44.3	4.1	29.6	4.2	22.2	4.4	17.7	4.6	11.8	5.0	8.9	5.4		
	Giallo Yellow Jaune Gelb Amarillo	1	8.82	529	31.74	1.79	62.2	1.5	31.1	1.7	20.7	1.9	15.6	2.0	12.4	2.2	8.3	2.6	6.2	3.0	
		2	12.26	735.8	44.15	86.6	2.9	43.3	3.0	28.9	3.2	21.6	3.4	17.3	3.5	11.5	4.0	8.7	4.4		
		3	15.08	905	54.30	106.5	4.2	53.2	4.4	35.5	4.5	26.6	4.7	21.3	4.9	14.2	5.3	10.6	5.7		
	Rosso Red Rouge Rot Rojo	1	10.50	629.8	37.79	1.79	74.1	1.7	37.0	1.9	24.7	2.0	18.5	2.2	14.8	2.4	9.9	2.8	7.4	3.2	
		2	14.50	870.2	52.21	102.4	3.1	51.2	3.3	34.1	3.5	25.6	3.6	20.5	3.8	13.7	4.2	10.2	4.6		
		3	17.60	1056.2	63.37	124.3	4.5	62.1	4.7	41.4	4.9	31.1	5.0	24.9	5.2	16.6	5.6	12.4	6.0		
	Nero Black Noir Schwarz Negro	1	15.38	922.8	55.36	1.79	108.5	2.2	54.3	2.4	36.2	2.6	27.1	2.7	21.7	2.9	14.5	3.3	10.9	3.7	
		2	21.74	1304.4	78.26	153.5	4.2	76.7	4.4	51.2	4.5	38.4	4.7	30.7	4.9	20.5	5.3	15.3	5.7		
		3	25.79	1547.4	92.84	182.0	6.0	91.0	6.1	60.7	6.3	45.5	6.5	36.4	6.6	24.3	7.0	18.2	7.5		

125										400													
BOOM	Boccaglio Nozzle Ajoutage Duese	ATM	Portata totale Total capacity Debit total Gesamtwasserführung Caudal total				Area irrigata Irrigated area Surface arrosée Beregnete Area Area regada	VELOCITA' MT/H PLUVIOMETRIA E PRESSIONE ALL'INGRESSO SPEED MT/H, RATE AND INLET PRESSURE VITESSE MT/H, PLUVIOMETRIE ET PRESSION A L'ENTREE GESCHWINDIGKEIT MT/H, NIEDERSCHLAG UND EINGANGSDRUCK VELOCIDADE MT/H, PLUVIOMETRIA Y PRESSION A L'ENTREGA															
								10		20		30		40		50		75		100			
			lt/sec	lt/min	mc/h	HA		mm	BAR	mm	BAR	mm	BAR	mm	BAR	mm	BAR	mm	BAR	mm	BAR		
			Boquilla																				
MOD. 47 \ 55	Verde Green Vert Grün Verde	1	7.42	445	26.70	2.04	52.4	1.5	26.2	1.7	17.5	1.8	13.1	2.0	10.5	2.2	7.0	2.6	5.2	3.0			
		2	10.58	635	38.10		74.7	2.8	37.4	2.9	24.9	3.1	18.7	3.3	14.9	3.4	10.0	3.9	7.5	4.3			
		3	12.56	753.8	45.23		88.7	4.0	44.3	4.2	29.6	4.3	22.2	4.5	17.7	4.7	11.8	5.1	8.9	5.5			
	Giallo Yellow Jaune Gelb Amarillo	1	8.82	529	31.74	2.04	62.2	1.6	31.1	1.8	20.7	1.9	15.6	2.1	12.4	2.3	8.3	2.7	6.2	3.1			
		2	12.26	735.8	44.15		86.6	3.0	43.3	3.1	28.9	3.3	21.6	3.5	17.3	3.6	11.5	4.1	8.7	4.5			
		3	15.08	905	54.30		106.5	4.4	53.2	4.5	35.5	4.7	26.6	4.9	21.3	5.0	14.2	5.4	10.6	5.9			
	Rosso Red Rouge Rot Rojo	1	10.50	629.8	37.79	2.04	74.1	1.8	37.0	1.9	24.7	2.1	18.5	2.3	14.8	2.4	9.9	2.9	7.4	3.3			
		2	14.50	870.2	52.21		102.4	3.3	51.2	3.4	34.1	3.6	25.6	3.8	20.5	3.9	13.7	4.4	10.2	4.8			
		3	17.60	1056.2	63.37		124.3	4.7	62.1	4.9	41.4	5.1	31.1	5.2	24.9	5.4	16.6	5.8	12.4	6.2			
	Nero Black Noir Schwarz Negro	1	15.38	922.8	55.36	2.04	108.5	2.4	54.3	2.6	36.2	2.7	27.1	2.9	21.7	3.1	14.5	3.5	10.9	3.9			
		2	21.74	1304.4	78.26		153.5	4.5	76.7	4.7	51.2	4.8	38.4	5.0	30.7	5.2	20.5	5.6	15.3	6.0			
		3	25.79	1547.4	92.84		182.0	6.4	91.0	6.5	60.7	6.7	45.5	6.9	36.4	7.0	24.3	7.4	18.2	7.9			

125										450											
BOOM	Boccaglio Nozzle Ajoutage Duese	ATM	Portata totale Total capacity Debit total Gesamtwasserführung Caudal total			Area irrigata Irrigated area Surface arrosée Beregnete Area Area regada	VELOCITA' MT/H PLUVIOMETRIA E PRESSIONE ALL'INGRESSO SPEED MT/H, RATE AND INLET PRESSURE VITESSE MT/H, PLUVIOMETRIE ET PRESSION A L'ENTREE GESCHWINDIGKEIT MT/H, NIEDERSCHLAG UND EINGANGSDRUCK VELOCIDADE MT/H, PLUVIOMETRIA Y PRESSION A L'ENTREGA														
							10		20		30		40		50		75		100		
			lt/sec	lt/min	mc/h		HA	mm	BAR	mm	BAR	mm	BAR	mm	BAR	mm	BAR	mm	BAR	mm	BAR
			Boquilla																		
MOD. 47 \ 55	Verde Green Vert Grün Verde	1	7.42	445	26.70	2.30	52.4	1.5	26.2	1.7	17.5	1.9	13.1	2.0	10.5	2.2	7.0	2.6	5.2	3.0	
		2	10.58	635	38.10		74.7	2.9	37.4	3.0	24.9	3.2	18.7	3.4	14.9	3.5	10.0	3.9	7.5	4.4	
		3	12.56	753.8	45.23		88.7	4.1	44.3	4.3	29.6	4.4	22.2	4.6	17.7	4.8	11.8	5.2	8.9	5.6	
	Giallo Yellow Jaune Gelb Amarillo	1	8.82	529	31.74	2.30	62.2	1.7	31.1	1.8	20.7	2.0	15.6	2.2	12.4	2.3	8.3	2.7	6.2	3.2	
		2	12.26	735.8	44.15		86.6	3.1	43.3	3.2	28.9	3.4	21.6	3.6	17.3	3.7	11.5	4.2	8.7	4.6	
		3	15.08	905	54.30		106.5	4.5	53.2	4.7	35.5	4.8	26.6	5.0	21.3	5.2	14.2	5.6	10.6	6.0	
	Rosso Red Rouge Rot Rojo	1	10.50	629.8	37.79	2.30	74.1	1.8	37.0	2.0	24.7	2.2	18.5	2.3	14.8	2.5	9.9	2.9	7.4	3.3	
		2	14.50	870.2	52.21		102.4	3.4	51.2	3.6	34.1	3.7	25.6	3.9	20.5	4.1	13.7	4.5	10.2	4.9	
		3	17.60	1056.2	63.37		124.3	4.9	62.1	5.1	41.4	5.3	31.1	5.4	24.9	5.6	16.6	6.0	12.4	6.4	
	Nero Black Noir Schwarz Negro	1	15.38	922.8	55.36	2.30	108.5	2.5	54.3	2.7	36.2	2.9	27.1	3.0	21.7	3.2	14.5	3.6	10.9	4.0	
		2	21.74	1304.4	78.26		153.5	4.8	76.7	5.0	51.2	5.1	38.4	5.3	30.7	5.5	20.5	5.9	15.3	6.3	
		3	25.79	1547.4	92.84		182.0	6.8	91.0	6.9	60.7	7.1	45.5	7.3	36.4	7.4	24.3	7.8	18.2	8.3	

SUPPLIERS AND INSTALLERS OF PUMPING AND IRRIGATION EQUIPMENT
Admin, Sales & Factory: 8 Buckman Close, Toormina NSW 2452. PO Box 514 Coffs Harbour NSW 2450
Phone: 02 6652 5264 **Fax:** 02 6652 8595
Email: sales@monsoonirrigators.com.au **Web:** www.monsoonirrigators.com.au

MONSOON

Irrigators Australia Pty Ltd

COST EFFICIENT IRRIGATORS



REELS UNDER CONSTRUCTION



MONSOON IRRIGATORS PARTLY ASSEMBLED



125mm – 420 IRRIGATOR MANUFACTURED TO MINING SPECIFICATIONS



READY FOR DELIVERY



CAPRARI/JOHN DEERE DIESEL PUMP SET

MONSOON IRRIGATORS AUSTRALIA PTY LTD has its Factory, Admin/Sales in Toormina, Northern NSW. Monsoon is a privately owned company established in 1992. The company has been constructing Hose Reel Sprinkler Gun and Low Pressure Boom Irrigators for the past 26 years, and has in excess of 2000 machines in service Australia wide. Monsoon has built a solid reputation on quality, service and spare parts backup to its customers and dealer network throughout Australia. Monsoon provides a technical and design service to its customer network. Monsoon uses Quality Australian made "Parallel" Bore Hose which has a "Uniform" Co-Efficient of Expansion providing a "Long Life Span" unlike "Taper Hoses" that do not expand uniformly.

Monsoon offers a range of Irrigation Products Including

- **Caprari** Multi-Stage Diesel Driven Pump Sets
- **S/Cross** Electrical Driven Pump Sets

- **Komet** Sprinklers
- **Read** Hand Priming Pumps and Hydrant Fittings.
- **Monsoon** Pivot & Lateral Move Irrigators

Recommended Price

Irrigator Model

Options

Freight & Handling

Quoted Price Total (excl. GST)

\$
\$
\$
\$

DEALER: